



# Ministry of Health Uganda

## Weekly Epidemiological Bulletin

### Highlights of the week

- Updates on Cholera outbreak in Hoima District
- Cholera outbreak in

Epidemiological week 43 of 2015 [19<sup>th</sup> – 25<sup>th</sup> Oct 2015]

### Disease Outbreaks

### Summary Table

| Indicator        | Week 42<br>2015 | Week 43<br>2015 |
|------------------|-----------------|-----------------|
| % Districts      | 100             | 100             |
| Ave % HU         | 63              | 55              |
| % Timely reports | *               | *               |
| AFP              | 4 (0)           | 1 (0)           |
| Animal bites     | 256 (0)         | 169 (0)         |
| Cholera          | 3 (0)           | 0               |
| Dysentery        | 756 (0)         | 700 (1)         |
| Guinea Worm      | 0               | 0               |
| Malaria          | 129331<br>(38)  | 115104<br>(36)  |
| Measles          | 136 (0)         | 118 (0)         |
| Meningitis       | 3 (1)           | 6 (3)           |
| NNT              | 2 (0)           | 1 (0)           |
| Plague           | 0               | 0               |
| Typhoid          | 1291(1)         | 1093(0)         |

\*Indicator not provided

### Completeness of Reporting

In week 43, all districts reported but completeness reduced from 63% in week 42 to 55% average. Only 16 districts achieved the national target of  $\geq 80\%$  of the health facilities reporting completeness and 5 districts i.e. Alebtong, Moyo, Kole, Amudat and Dokolo had 100% completeness. Reporting rates by region indicate a general drop in completeness but the Northern region leads (**Figure 1**). The best and worst districts have been presented in **Figure 2**.

### Cholera in Hoima District:

The outbreak started on 28<sup>th</sup> September 2015 in Nkondo II village, Nkondo Parish, Kabwoya Sub-county in Hoima District. In the weekly data for week 43, no cholera case was reported by Hoima. Several cases were managed at Nkondo Treatment Centre, until mid-October, when this CTC was closed because there were no more cases (**Figure 3**). The case that was admitted at Kaiso-Tonya cholera treatment centre on 4<sup>th</sup> November has been discharged. By 4<sup>th</sup> November, a total of 180 cases (1 health facility and 5 community deaths; case fatality rate 3%) had been reported (**Table 1**). The average age is 18.7 years; with 67 years and 1.5 years as maximum and minimum ages respectively. By sex, 105 (62%) of the cases were males, mostly fishermen and children. Twelve samples processed at Central Public Health Laboratories were culture positive for *Vibrio cholerae* 01 Inaba. Additional 27 samples tested positive with the Cholera rapid diagnostic test.

Table 1: Summary statistics of the cholera outbreak in Hoima district

| No | Summary of cases                               | Total Number |
|----|--|--------------|
| 1  | New suspect cases today                        | 0            |
| 2  | New deaths                                     | 0            |
| 3  | Cumulative cases (suspect and probable)        | 180          |
|    | Five years and below                           | 57           |
|    | Above five years                               | 123          |
| 4  | Cumulative deaths (probable & confirmed cases) | 6            |
|    | • Health Facilities                            | 1            |
|    | • Community                                    | 5            |
| 5  | Total number of cases on admission             | 1            |
| 6  | Cummulative cases discharged                   | 174          |
| 7  | Cummulative cases of Health Care Workers       | 0            |
| 8  | Cumulative specimens collected                 | 32           |
| 9  | Cummulative cases with lab. confirmation       | 32           |
| 10 | Cholera RDT Positive cases                     | 27           |
| 11 | Culture positive cases                         | 12           |

### Busia District Cholera outbreak

A total of 22 cases (2 deaths, CFR 9.1%) have been reported as of 6<sup>th</sup> November 2015 in Busia Municipality. The index case was identified on 29<sup>th</sup> October 2015 and 3 more cases were reported on 30<sup>th</sup> October. Two samples have been confirmed positive by culture (*Vibrio cholerae*) and 1 RDT positive for Cholera. Currently, 4 patients (including 3 new cases) are on admission Busia HCIV. Some cases have also been treated at Masafu Hospital. The deaths were in health facilities; one reported late and died on arrival.

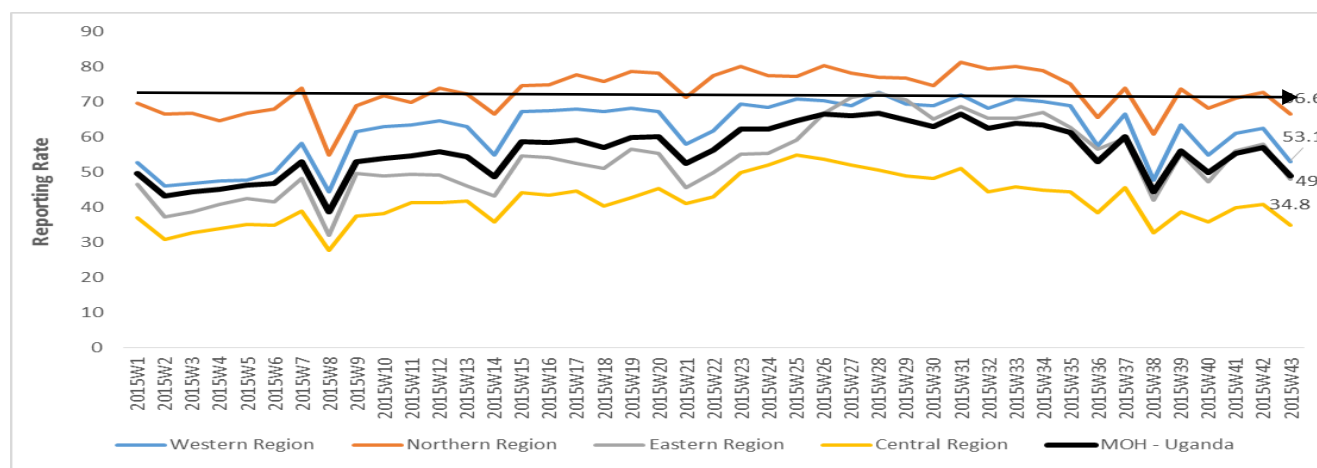
**Actions:** The DHT alerted the national level within the stipulated 48 hours of reporting. The national response team will be sent to support the district next week. Medical supplies have been sent to the district to support case management.

### Unknown illness in Buliisa & Hoima districts:

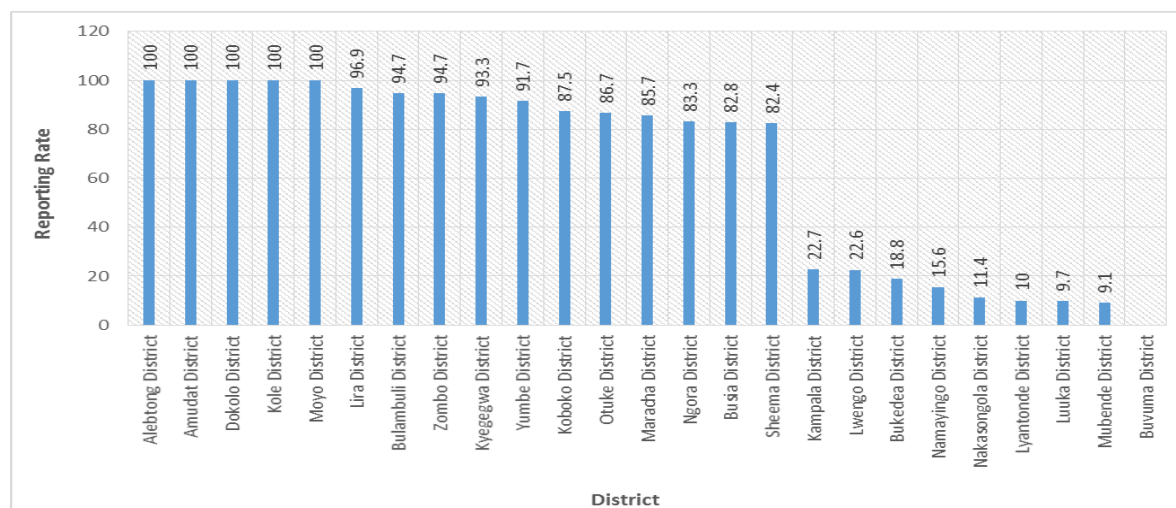
On 23<sup>rd</sup> September 2015, the Ministry of Health received information on suspected haemorrhagic fever in Buliisa and Hoima districts. By 5<sup>th</sup> November, there were no new cases reported in Hoima Regional Referral Hospital or in other facilities.

**Acute diarrhoea cases in Rwebisengo, Ntoroko district:** No new cases were reported by but community and health facility surveillance has continued. The event was reported on 15<sup>th</sup> October and so far, 128 cases have been treated, with no death. Laboratory samples (5) tested at CPHL indicated 2 as *Shigella* positive by culture and isolation.

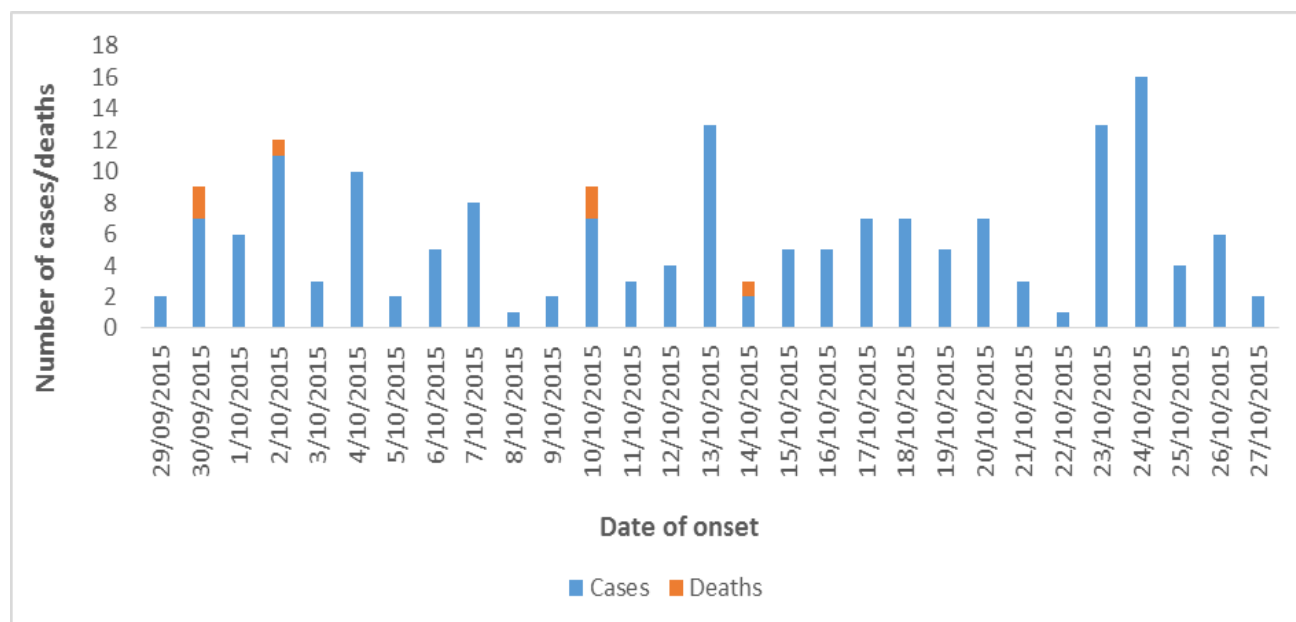
**Malaria:** Malaria cases reduced from 129331 in week 42 to 115104 in week 43 (reflecting possibly a reduction in reporting completeness). Gulu, Moyo, Kasese, Adjumani, Yumbe and Arua reported more than 3000 cases. The cases in the 10 outbreak districts in Northern Uganda and Arua remain slightly above the normal channels (Figures 3-13).



**Figure 1: Percent Weekly Reporting by Region.** Northern Uganda has been leading since the start of the year – close to the national target of 80%, whereas the central region is at the bottom during the respective reporting periods.

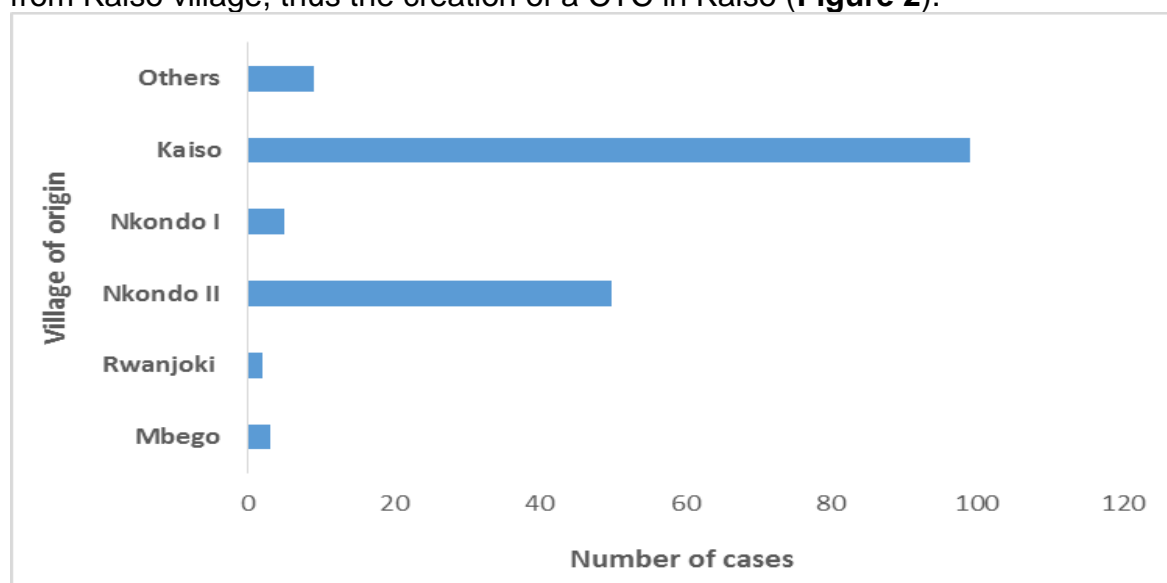


**Figure 2: Percent reporting rate (completeness) of the best and worst performing districts**

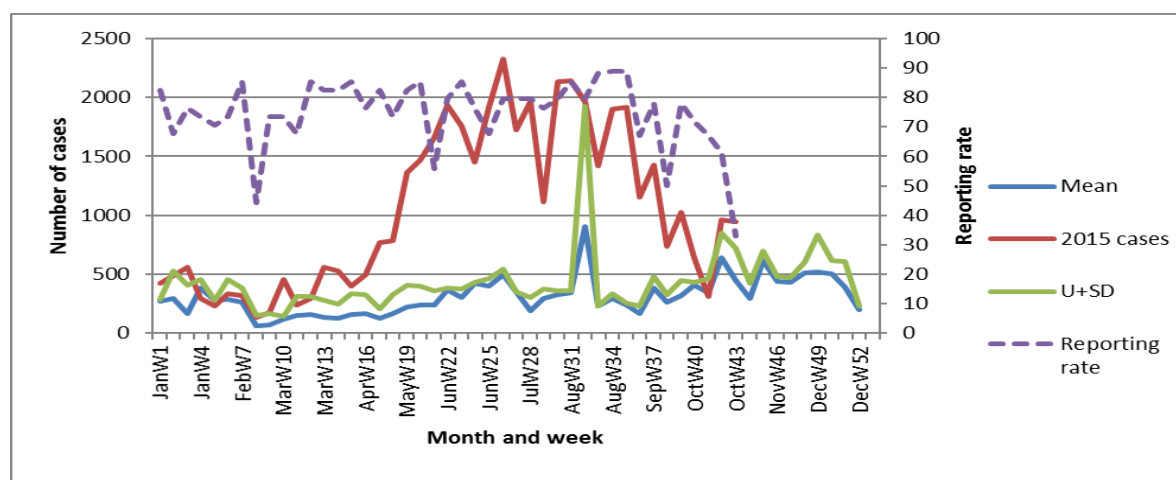


**Figure 3: Epidemic curve of cholera outbreak in Hoima district, 2015**

Most of the cases initially were from Nkondo II village but after 12<sup>th</sup> October, cases have mainly been from Kaiso village, thus the creation of a CTC in Kaiso (**Figure 2**).



**Figure 4: Cholera cases by village of origin in Hoima District**



**Figure 5: Malaria normal channels and reporting rates for Nwoya district**

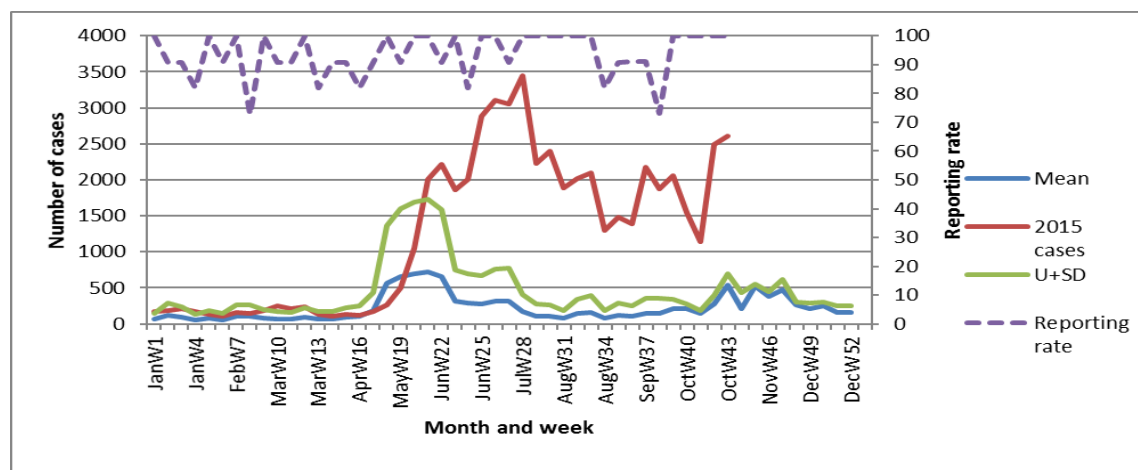


Figure 6: Malaria normal channels and reporting rates for Kile district

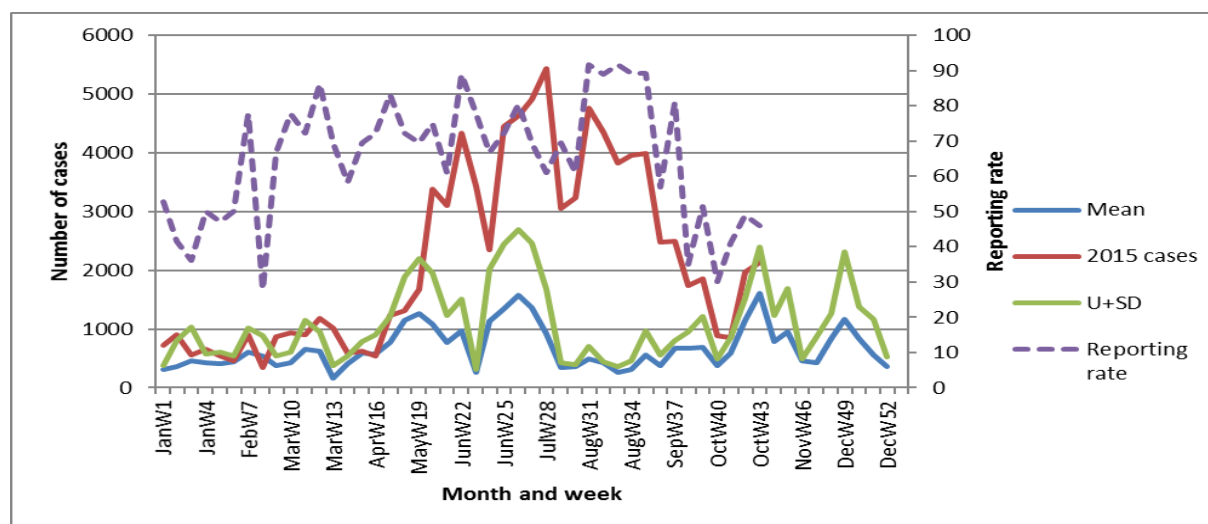


Figure 7: Malaria normal channels and reporting rates for Apac district

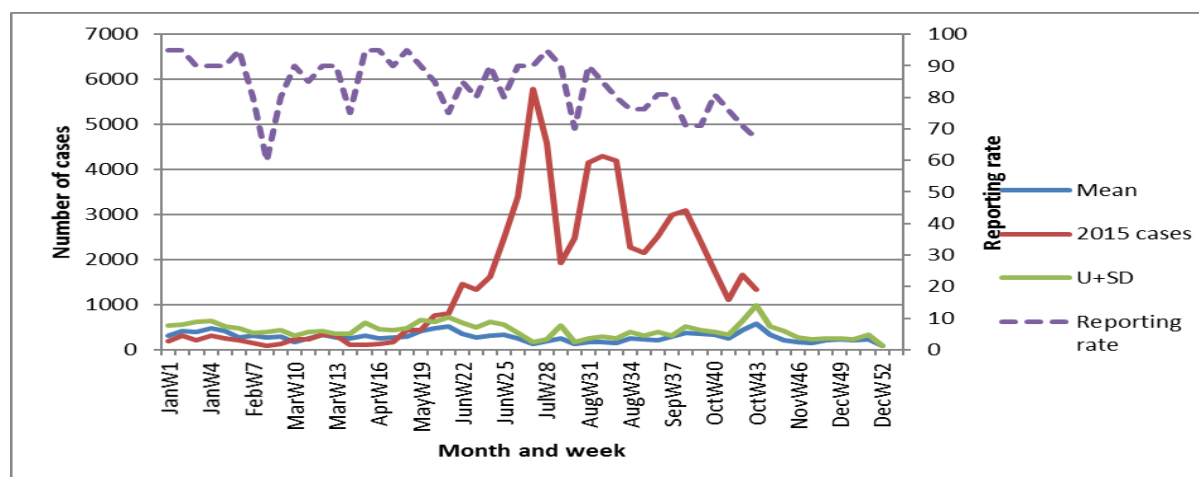
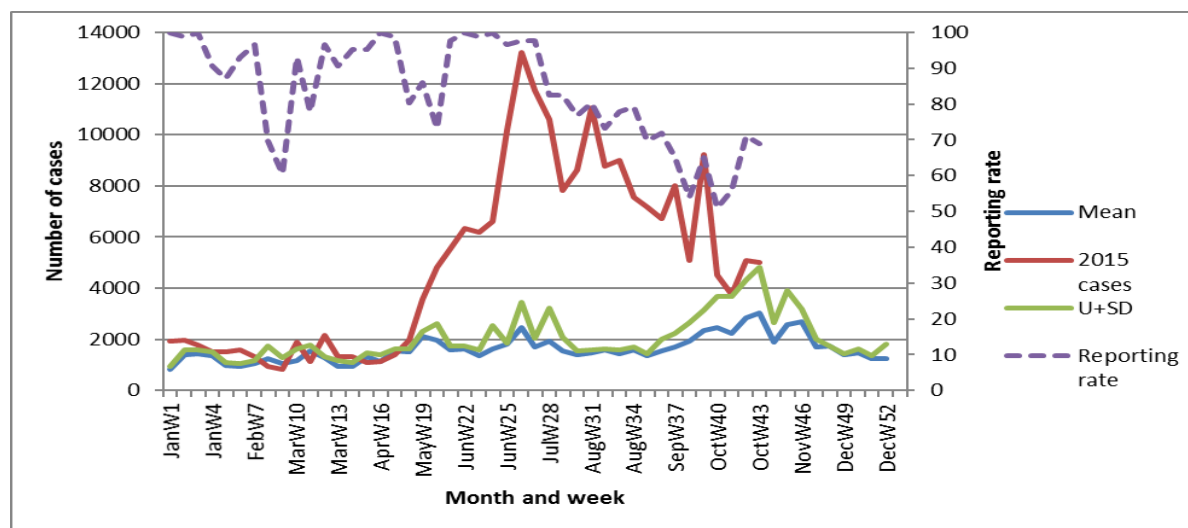
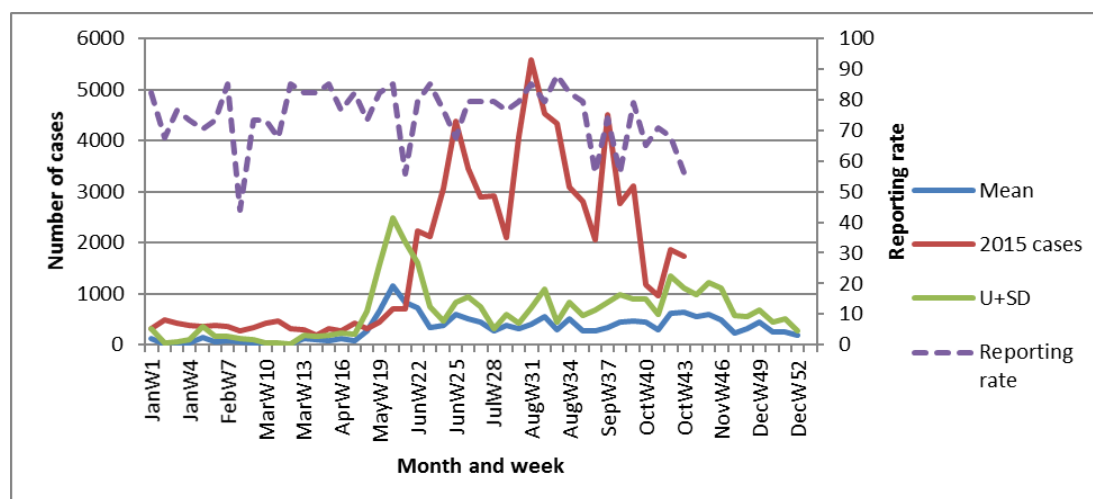


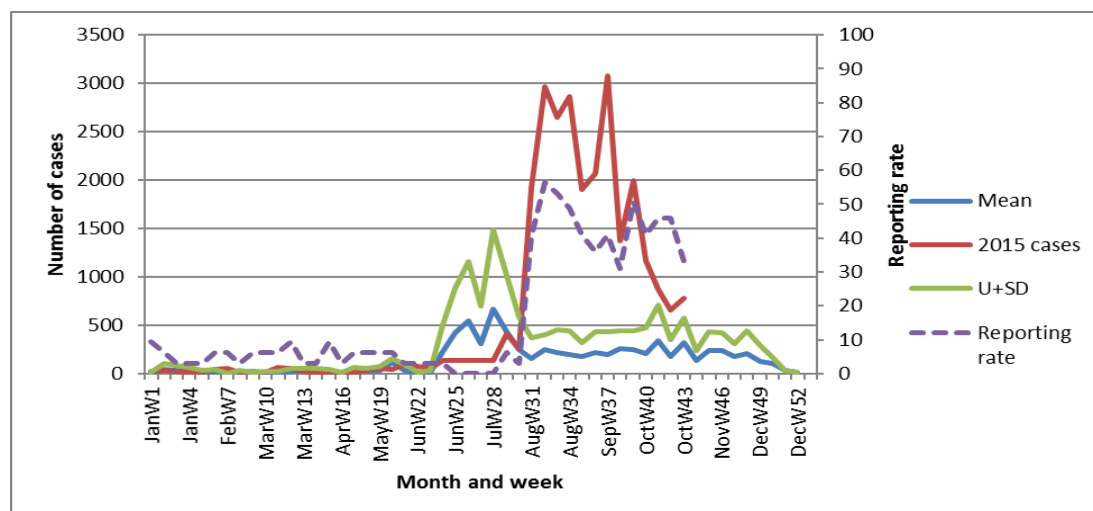
Figure 8: Malaria normal channels and reporting rates for Lamwo district



**Figure 9: Malaria normal channels and reporting rates for Gulu district**



**Figure 10: Malaria normal channels and reporting rates for Agago district**



**Figure 11: Malaria normal channels and reporting rates for Pader district**

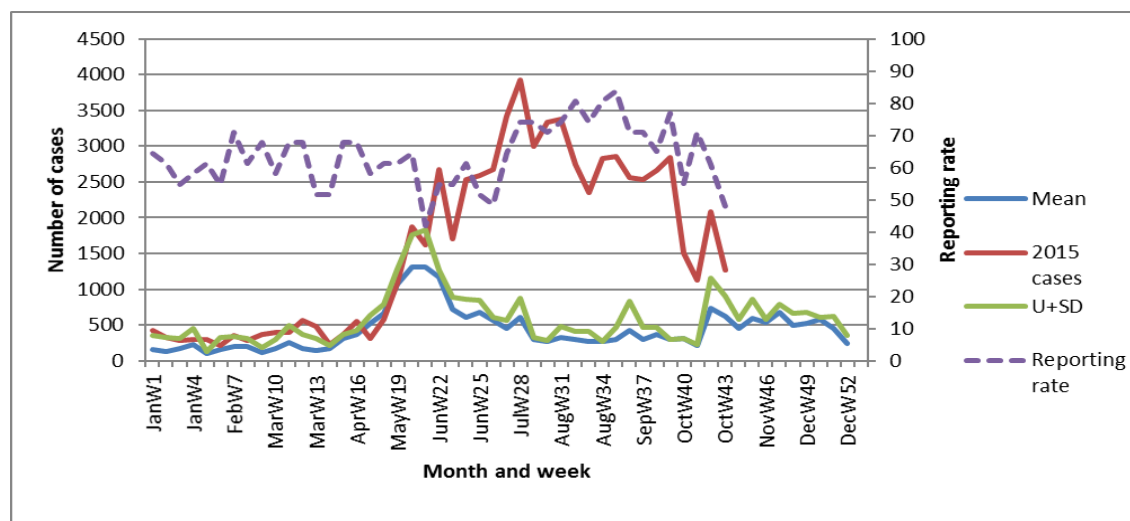


Figure 12: Malaria normal channels and reporting rates for Oyam district

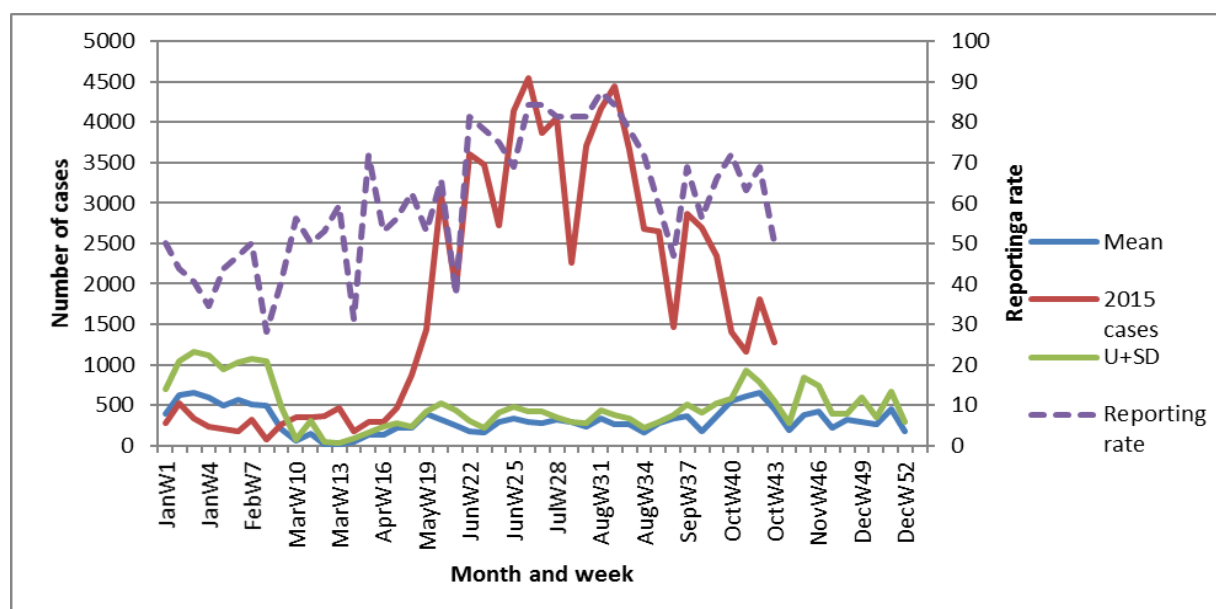


Figure 13: Malaria normal channels and reporting rates for Amuru district

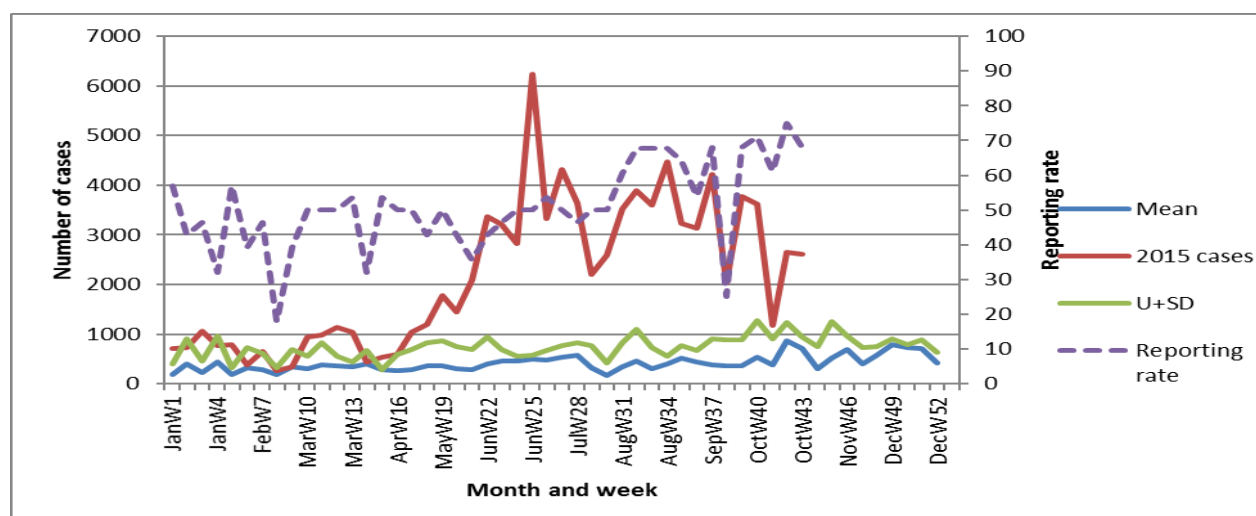


Figure 14: Malaria normal channels and reporting rates for Kitgum district. The increase in number of cases reflects the change in reporting rate but cases are still above the normal channel.



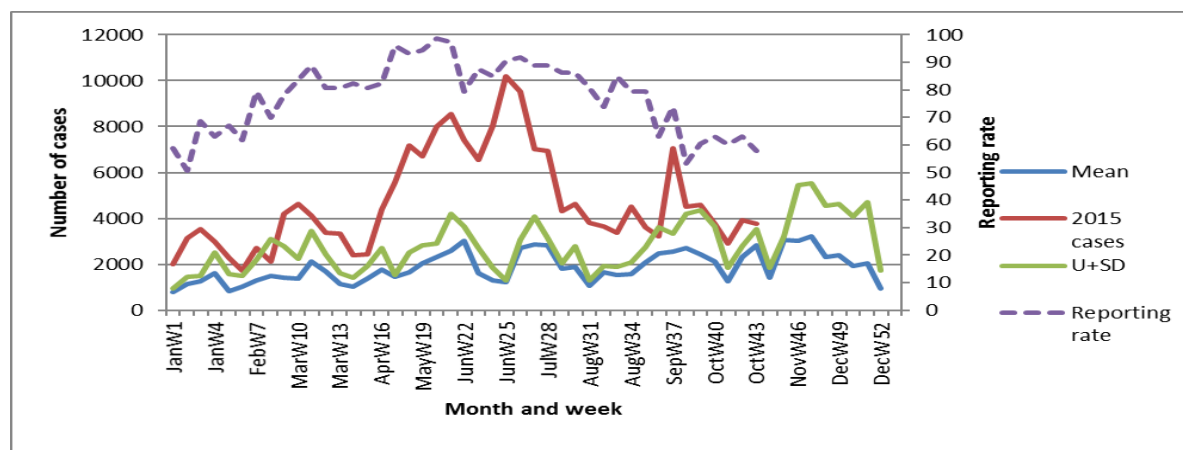


Figure 15: Malaria normal channels and reporting rates for Arua district

### Other priority diseases

**AFP:** Every district has reported at least one AFP case this year. Padre Pio HC III, Kamwenge municipality, Kamwenge district reported once case of AFP in week 43. The Non-polio AFP rate is 2.47/100,000 children aged 0 – 14 years compared to Non-polio AFP rate of 2.14/100,000 in the corresponding week of 2014.

**Typhoid fever:** In week 43, up to 76 districts reported at least one case of typhoid, and 20 of these exceeded the 20 cases alert threshold. Kampala city reported 115 cases, which was the highest number of suspected typhoid cases

**Measles:** The number of suspected measles cases reported was similar to that in week 42. Seven districts reported 5 or more suspected cases (**Figure 16**).

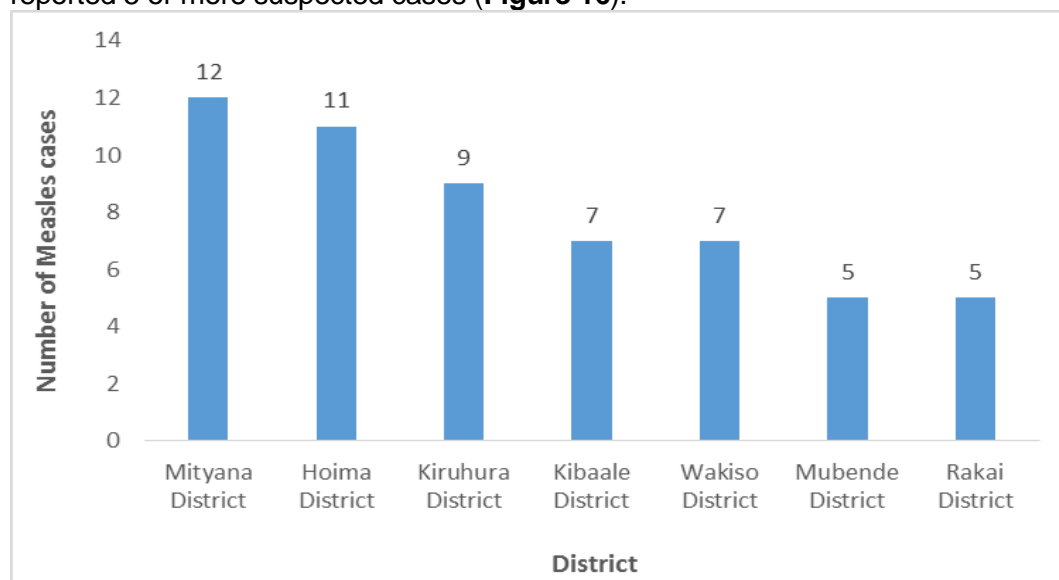
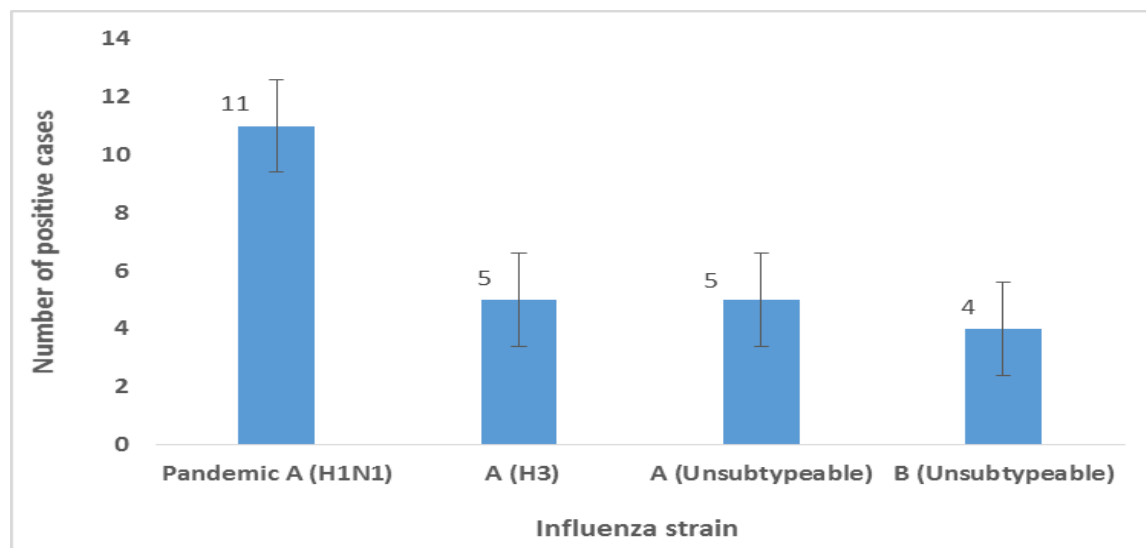


Figure 16: Districts reporting 5 or more cases of measles in week 43, 2015

**Influenza in Humans:** The number of cases of influenza reported in the weekly surveillance system at Makerere University Walter Reed Project were four; two due to Influenza A (H1N1); one caused by A (H3) and the other by A unsubtypeable.



## International Health Event

### Ebola VHF in West Africa

Three new confirmed cases of Ebola virus disease (EVD) under follow up in Guinea have recovered. Currently 246 contacts are under follow-up in Guinea (70 are high risk), and an additional 253 contacts identified during the past 42 days remain untraced. Sierra Leone reported 0 cases for the 6th consecutive week. Confirmed 15,208 (not available) [3 cases in past 28 days]; Probable 2619 (not available); Suspected 10,649 (not available) Total 28,476 (11,298)

**Editorial:** Mr. J. Kissa, Dr. B. Masiira, Dr. M. Musenero, Mr. M. Mugagga, Dr. J. Wamala, Dr. I. Makumbi, Dr. R. Musoke, Dr. J. Sekajugo, Dr. F. Adatu, Dr. C. Okot, Dr. M. Nanyunja, Dr. I. Nabukenya

**Founders:** Dr. J. Kamugisha (RIP), Dr. J. Wanyana, Dr. M. Lamunu, Dr. C. Mugero, Dr. N Ndayimirigye, Mr. L. Luswa (RIP), Dr. N. Bakyaita, Mr. M. Mugagga

*For comments please contact: The Epidemiological Surveillance Division- M.O.H; P.O BOX 7272 Kampala, Tel: 0414-340874/0414-345108;  
Email: [esd@health.go.ug](mailto:esd@health.go.ug) or [esduganda@yahoo.co.uk](mailto:esduganda@yahoo.co.uk)*



# Summary table for epidemiological reports received for week ending 25<sup>th</sup> October 2015

(Numbers in brackets indicate deaths)

| District     | % of H/U reporting | AFP | Animal bites | Cholera | Dysentery | Guinea Worm | Malaria | Measles | Meningitis | NNT | Plague | Typhoid Fever |
|--------------|--------------------|-----|--------------|---------|-----------|-------------|---------|---------|------------|-----|--------|---------------|
| Abim         | 45                 | 0   | 0            | 0       | 1         | 0           | 233     | 0       | 0          | 0   | 0      | 0             |
| Adjumani     | 80                 | 0   | 1            | 0       | 23        | 0           | 3,358   | 0       | 0          | 0   | 0      | 0             |
| Agago        | 56                 | 0   | 1            | 0       | 15        | 0           | 1,736   | 0       | 0          | 0   | 0      | 9             |
| Alebtong     | 100                | 0   | 1            | 0       | 0         | 0           | 620     | 0       | 0          | 0   | 0      | 9             |
| Amolatar     | 77                 | 0   | 0            | 0       | 1         | 0           | 174     | 0       | 0          | 0   | 0      | 2             |
| Amudat       | 100                | 0   | 1            | 0       | 7         | 0           | 142     | 0       | 0          | 0   | 0      | 5             |
| Amuria       | 72                 | 0   | 0            | 0       | 1         | 0           | 2,973   | 1       | 0          | 0   | 0      | 5             |
| Amuru        | 50                 | 0   | 0            | 0       | 12        | 0           | 1,277   | 0       | 0          | 0   | 0      | 0             |
| Apac         | 46                 | 0   | 3            | 0       | 0         | 0           | 2138(1) | 0       | 0          | 0   | 0      | 0             |
| Arua         | 58                 | 0   | 1            | 0       | 14        | 0           | 3749(1) | 0       | 0          | 0   | 0      | 45            |
| Budaka       | 63                 | 0   | 0            | 0       | 2         | 0           | 776     | 0       | 0          | 0   | 0      | 1             |
| Bududa       | 73                 | 0   | 2            | 0       | 3         | 0           | 527(1)  | 0       | 0          | 0   | 0      | 2             |
| Bugiri       | 26                 | 0   | 2            | 0       | 3         | 0           | 839     | 0       | 0          | 0   | 0      | 26            |
| Buhweju      | 47                 | 0   | 0            | 0       | 0         | 0           | 65      | 4       | 0          | 0   | 0      | 0             |
| Buikwe       | 64                 | 0   | 2            | 0       | 16        | 0           | 1,183   | 1       | 0          | 0   | 0      | 23            |
| Bukedea      | 19                 | 0   | 0            | 0       | 0         | 0           | 184     | 0       | 0          | 0   | 0      | 0             |
| Bukomansimbi | 59                 | 0   | 0            | 0       | 4         | 0           | 298     | 0       | 0          | 0   | 0      | 0             |
| Bukwo        | 38                 | 0   | 1            | 0       | 13        | 0           | 192     | 0       | 0          | 0   | 0      | 7             |
| Bulambuli    | 95                 | 0   | 0            | 0       | 0         | 0           | 579     | 0       | 0          | 0   | 0      | 0             |
| Buliisa      | 46                 | 0   | 4            | 0       | 1         | 0           | 950     | 0       | 0          | 0   | 0      | 0             |
| Bundibugyo   | 67                 | 0   | 0            | 0       | 38        | 0           | 1,089   | 0       | 0          | 0   | 0      | 13            |
| Bushenyi     | 44                 | 0   | 0            | 0       | 0         | 0           | 396     | 0       | 0          | 0   | 0      | 10            |
| Busia        | 83                 | 0   | 7            | 0       | 7         | 0           | 1308(1) | 2       | 1          | 0   | 0      | 23            |
| Butaleja     | 42                 | 0   | 0            | 0       | 4         | 0           | 725     | 0       | 0          | 0   | 0      | 0             |
| Butambala    | 65                 | 0   | 0            | 0       | 0         | 0           | 166     | 0       | 0          | 0   | 0      | 0             |
| Buvuma       | NR                 | NR  | NR           | NR      | NR        | NR          | NR      | NR      | NR         | NR  | NR     | NR            |
| Buyende      | 73                 | 0   | 0            | 0       | 1         | 0           | 881(1)  | 1       | 0          | 0   | 0      | 0             |
| Dokolo       | 100                | 0   | 1            | 0       | 2         | 0           | 867     | 0       | 0          | 0   | 0      | 11            |
| Gomba        | 79                 | 0   | 0            | 0       | 2         | 0           | 462     | 0       | 0          | 1   | 0      | 0             |
| Gulu         | 69                 | 0   | 6            | 0       | 33        | 0           | 5,006   | 2       | 0          | 0   | 0      | 25            |
| Hoima        | 41                 | 0   | 2            | 3       | 20        | 0           | 1,054   | 11      | 0          | 0   | 0      | 8             |
| Ibanda       | 36                 | 0   | 0            | 0       | 0         | 0           | 1,020   | 0       | 0          | 0   | 0      | 0             |
| Iganga       | 43                 | 0   | 0            | 0       | 1         | 0           | 1426(3) | 0       | 0          | 0   | 0      | 0             |
| Isingiro     | 70                 | 0   | 1            | 0       | 6         | 0           | 1,240   | 0       | 0          | 0   | 0      | 21            |
| Jinja        | 26                 | 0   | 6            | 0       | 7         | 0           | 1189(4) | 0       | 0          | 0   | 0      | 2             |
| Kaabong      | 44                 | 0   | 1            | 0       | 21        | 0           | 709     | 0       | 0          | 0   | 0      | 10            |
| Kabale       | 74                 | 0   | 6            | 0       | 1         | 0           | 171     | 0       | 0          | 0   | 0      | 0             |
| Kabarole     | 50                 | 0   | 0            | 0       | 1         | 0           | 974     | 1       | 1          | 0   | 0      | 9             |
| Kaberamaido  | 44                 | 0   | 2            | 0       | 4         | 0           | 1,070   | 1       | 0          | 0   | 0      | 14            |
| Kalangala    | 24                 | 0   | 0            | 0       | 2         | 0           | 38      | 2       | 0          | 0   | 0      | 0             |
| Kaliro       | 43                 | 0   | 0            | 0       | 1         | 0           | 1,265   | 0       | 0          | 0   | 0      | 0             |
| Kalungu      | 31                 | 0   | 0            | 0       | 0         | 0           | 148     | 1       | 0          | 0   | 0      | 9             |
| Kampala      | 23                 | 0   | 0            | 0       | 11        | 0           | 1,726   | 4       | 0          | 0   | 0      | 115           |
| Kamuli       | 24                 | 0   | 1            | 0       | 1         | 0           | 1,107   | 0       | 0          | 0   | 0      | 5             |
| Kamwenge     | 61                 | 1   | 1            | 0       | 10        | 0           | 2,293   | 4       | 0          | 0   | 0      | 3             |
| Kanungu      | 63                 | 0   | 0            | 0       | 2         | 0           | 585     | 0       | 0          | 0   | 0      | 21            |
| Kapchorwa    | 70                 | 0   | 0            | 0       | 12        | 0           | 676     | 0       | 0          | 0   | 0      | 3             |
| Kasese       | 62                 | 0   | 0            | 0       | 30        | 0           | 3,386   | 3       | 0          | 0   | 0      | 32            |
| Katakwi      | 35                 | 0   | 5            | 0       | 2         | 0           | 1370(1) | 0       | 0          | 0   | 0      | 0             |
| Kayunga      | 29                 | 0   | 0            | 0       | 7         | 0           | 466     | 0       | 0          | 0   | 0      | 0             |
| Kibaale      | 24                 | 0   | 0            | 0       | 5         | 0           | 759     | 7       | 0          | 0   | 0      | 59            |

| District      | % of H/U reporting | AFP | Animal bites | Cholera | Dysentery | Guinea Worm | Malaria | Measles | Meningitis | NNT  | Plague | Typhoid Fever |
|---------------|--------------------|-----|--------------|---------|-----------|-------------|---------|---------|------------|------|--------|---------------|
| Kiboga        | 50                 | 0   | 1            | 0       | 3         | 0           | 284     | 2       | 0          | 0    | 0      | 22            |
| Kibuku        | 53                 | 0   | 0            | 0       | 4         | 0           | 410     | 0       | 0          | 0    | 0      | 1             |
| Kiruhura      | 40                 | 0   | 1            | 0       | 0         | 0           | 1,108   | 9       | 0          | 0    | 0      | 0             |
| Kiryandongo   | 65                 | 0   | 2            | 0       | 1         | 0           | 889     | 4       | 0          | 0    | 0      | 9             |
| Kisoro        | 76                 | 0   | 0            | 0       | 1         | 0           | 120     | 2       | 0          | 0    | 0      | 1             |
| Kitgum        | 68                 | 0   | 1            | 0       | 19        | 0           | 2618(2) | 0       | 0          | 0    | 0      | 38            |
| Koboko        | 88                 | 0   | 9            | 0       | 7         | 0           | 1828(2) | 0       | 0          | 0    | 0      | 3             |
| Kole          | 100                | 0   | 1            | 0       | 0         | 0           | 2615(1) | 3       | 0          | 0    | 0      | 0             |
| Kotido        | 26                 | 0   | 0            | 0       | 2         | 0           | 69      | 0       | 0          | 0    | 0      | 0             |
| Kumi          | 63                 | 0   | 5            | 0       | 4         | 0           | 1,179   | 1       | 0          | 0    | 0      | 47            |
| Kween         | 58                 | 0   | 0            | 0       | 5         | 0           | 398     | 0       | 0          | 0    | 0      | 1             |
| Kyankwanzi    | 36                 | 0   | 0            | 0       | 0         | 0           | 154     | 0       | 0          | 0    | 0      | 1             |
| Kyegegwa      | 93                 | 0   | 0            | 0       | 0         | 0           | 1,188   | 2       | 0          | 0    | 0      | 1             |
| Kyenjojo      | 36                 | 0   | 2            | 0       | 4         | 0           | 695     | 1       | 0          | 0    | 0      | 3             |
| Lamwo         | 67                 | 0   | 1            | 0       | 3         | 0           | 1,332   | 0       | 0          | 0    | 0      | 0             |
| Lira          | 97                 | 0   | 3            | 0       | 12        | 0           | 2,168   | 0       | 1          | 0    | 0      | 22            |
| Luuka         | 10                 | 0   | 0            | 0       | 0         | 0           | 222     | 0       | 0          | 0    | 0      | 0             |
| Luwero        | 50                 | 0   | 1            | 0       | 7         | 0           | 861     | 0       | 0          | 0    | 0      | 25            |
| Lwengo        | 23                 | 0   | 1            | 0       | 2         | 0           | 190(1)  | 0       | 0          | 0    | 0      | 17            |
| Lyantonde     | 10                 | 0   | 0            | 0       | 2         | 0           | 50      | 1       | 0          | 0    | 0      | 9             |
| Manafwa       | 79                 | 0   | 0            | 0       | 1         | 0           | 922     | 0       | 0          | 0    | 0      | 3             |
| Maracha       | 86                 | 0   | 10           | 0       | 10        | 0           | 1,331   | 0       | 0          | 0    | 0      | 19            |
| Masaka        | 44                 | 0   | 3            | 0       | 5         | 0           | 555     | 2       | 0          | 0    | 0      | 3             |
| Masindi       | 56                 | 0   | 1            | 0       | 17        | 0           | 943     | 1       | 0          | 0    | 0      | 12            |
| Mayuge        | 44                 | 0   | 1            | 0       | 14        | 0           | 1,336   | 0       | 0          | 0    | 0      | 0             |
| Mbale         | 47                 | 0   | 0            | 0       | 13        | 0           | 1061(3) | 1       | 0          | 1(1) | 0      | 17            |
| Mbarara       | 37                 | 0   | 3            | 0       | 5         | 0           | 715     | 4       | 0          | 0    | 0      | 13            |
| Mitooma       | 42                 | 0   | 3            | 0       | 0         | 0           | 702     | 0       | 0          | 0    | 0      | 1             |
| Mityana       | 48                 | 0   | 2            | 0       | 5         | 0           | 1052(3) | 12      | 0          | 0    | 0      | 9             |
| Moroto        | 33                 | 0   | 0            | 0       | 6         | 0           | 403     | 0       | 0          | 0    | 0      | 4             |
| Moyo          | 100                | 0   | 0            | 0       | 29        | 0           | 3815(1) | 0       | 0          | 0    | 0      | 17            |
| Mpigi         | 55                 | 0   | 0            | 0       | 2         | 0           | 608     | 0       | 0          | 0    | 0      | 3             |
| Mubende       | 9                  | 0   | 7            | 0       | 7         | 0           | 316(1)  | 5       | 0          | 1    | 0      | 56            |
| Mukono        | 51                 | 0   | 1            | 0       | 7         | 0           | 980     | 0       | 0          | 0    | 0      | 10            |
| Nakapiripirit | 59                 | 0   | 3            | 0       | 11        | 0           | 913(1)  | 0       | 0          | 2(1) | 0      | 21            |
| Nakaseke      | 54                 | 0   | 0            | 0       | 3         | 0           | 444     | 4       | 0          | 0    | 0      | 12            |
| Nakasongola   | 11                 | 0   | 0            | 0       | 2         | 0           | 81      | 0       | 0          | 0    | 0      | 10            |
| Namayingo     | 16                 | 0   | 0            | 0       | 3         | 0           | 223     | 0       | 0          | 0    | 0      | 0             |
| Namutumba     | 24                 | 0   | 0            | 0       | 1         | 0           | 1,083   | 1       | 0          | 0    | 0      | 6             |
| Napak         | 79                 | 0   | 6            | 0       | 9         | 0           | 797     | 0       | 0          | 0    | 0      | 8             |
| Nebbi         | 70                 | 0   | 4            | 0       | 16        | 0           | 2778(4) | 1       | 0          | 0    | 0      | 3             |
| Ngora         | 83                 | 0   | 0            | 0       | 2         | 0           | 913     | 0       | 0          | 0    | 0      | 2             |
| Ntoroko       | 44                 | 0   | 0            | 0       | 1         | 0           | 93      | 1       | 0          | 0    | 0      | 4             |
| Ntungamo      | 34                 | 0   | 0            | 0       | 0         | 0           | 557     | 0       | 0          | 0    | 0      | 0             |
| Nwoya         | 33                 | 0   | 0            | 0       | 0         | 0           | 943     | 0       | 0          | 0    | 0      | 0             |
| Otuke         | 87                 | 0   | 0            | 0       | 2         | 0           | 487     | 1       | 0          | 0    | 0      | 3             |
| Oyam          | 48                 | 0   | 4            | 0       | 4         | 0           | 1262(1) | 0       | 2(1)       | 0    | 0      | 0             |
| Pader         | 33                 | 0   | 0            | 0       | 8         | 0           | 783     | 0       | 0          | 0    | 0      | 0             |
| Pallisa       | 67                 | 0   | 2            | 0       | 7         | 0           | 1,472   | 0       | 0          | 0    | 0      | 3             |
| Rakai         | 49                 | 0   | 0            | 0       | 10        | 0           | 1,694   | 5       | 0          | 0    | 0      | 14            |
| Rubirizi      | 68                 | 0   | 0            | 0       | 0         | 0           | 436     | 0       | 0          | 0    | 0      | 1             |
| Rukungiri     | 46                 | 0   | 0            | 0       | 1         | 0           | 704     | 1       | 0          | 0    | 0      | 0             |
| Sembabule     | 38                 | 0   | 0            | 0       | 3         | 0           | 378     | 2       | 0          | 0    | 0      | 24            |

| District        | % of H/U reporting | AFP          | Animal bites   | Cholera      | Dysentery      | Guinea Worm | Malaria            | Measles        | Meningitis   | NNT          | Plague   | Typhoid Fever   |
|-----------------|--------------------|--------------|----------------|--------------|----------------|-------------|--------------------|----------------|--------------|--------------|----------|-----------------|
| Serere          | 52                 | 0            | 0              | 0            | 2              | 0           | 921                | 0              | 0            | 0            | 0        | 0               |
| Sheema          | 82                 | 0            | 3              | 0            | 0              | 0           | 1,034              | 0              | 0            | 0            | 0        | 0               |
| Sironko         | 57                 | 0            | 1              | 0            | 0              | 0           | 800                | 0              | 0            | 0            | 0        | 0               |
| Soroti          | 50                 | 0            | 8              | 0            | 7              | 0           | 1400(1)            | 0              | 0            | 0            | 0        | 29              |
| Tororo          | 74                 | 0            | 8              | 0            | 5              | 0           | 1,076              | 0              | 0            | 0            | 0        | 1               |
| Wakiso          | 28                 | 0            | 4              | 0            | 14             | 0           | 1,377              | 7              | 0            | 0            | 0        | 42              |
| Yumbe           | 92                 | 0            | 2              | 0            | 23             | 0           | 3003(2)            | 0              | 0            | 0            | 0        | 15              |
| Zombo           | 95                 | 0            | 7              | 0            | 22             | 0           | 770                | 0              | 0            | 0            | 0        | 1               |
| <b>National</b> | <b>55</b>          | <b>1 (0)</b> | <b>169 (0)</b> | <b>0 (0)</b> | <b>700 (1)</b> | <b>0(0)</b> | <b>115104 (36)</b> | <b>118 (0)</b> | <b>6 (2)</b> | <b>1 (0)</b> | <b>0</b> | <b>1093 (0)</b> |

**Key:** Yellow: 100% reporting, Green: 80-99% reporting, Red: Below 80% reporting

HU= Health Units, AFP=Acute Flaccid Paralysis, NNT=Neonatal Tetanus, NR =Not Reported

**Compiled by the Epidemiological Surveillance Division, Ministry of Health**